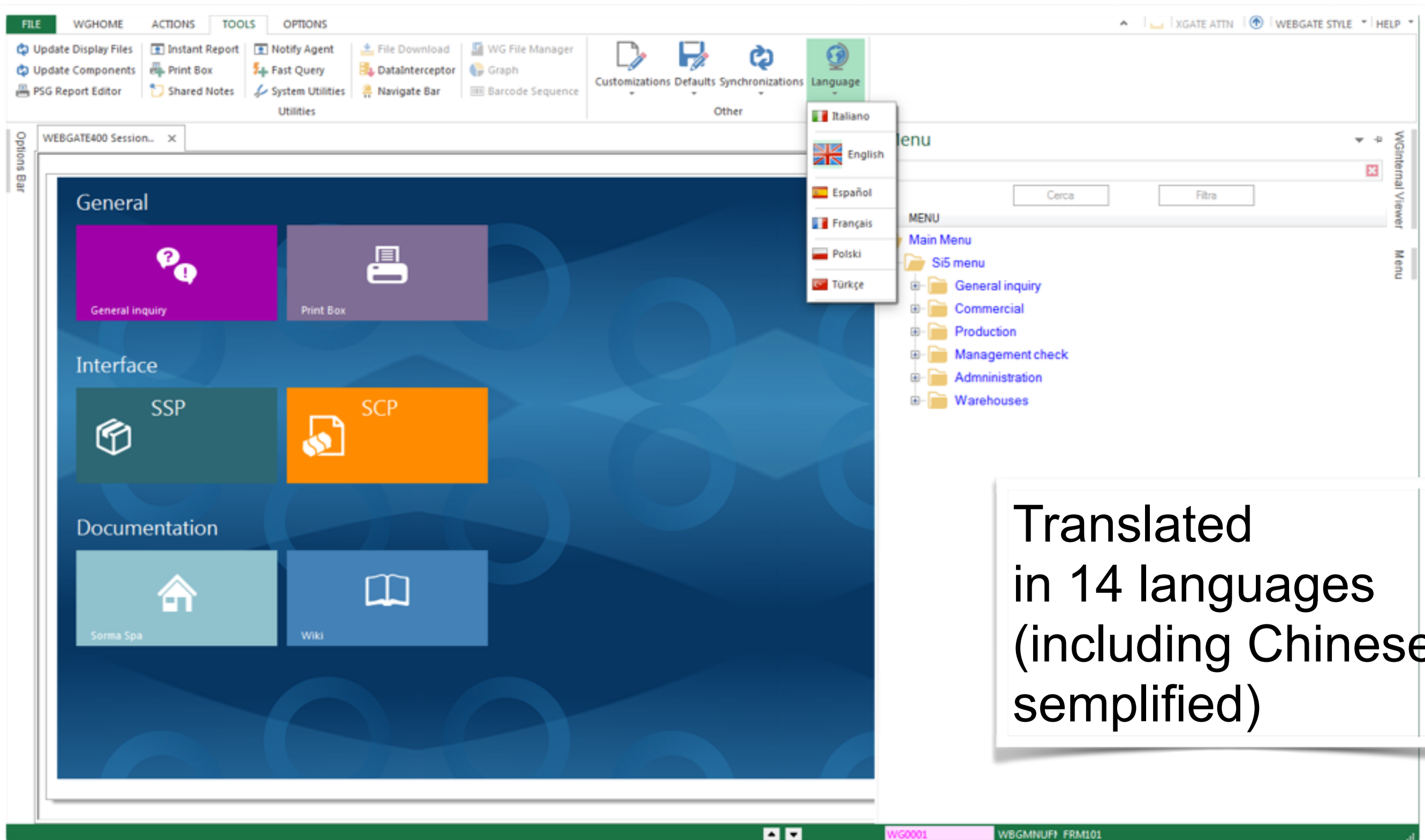


si5

The new user experience

User Interface main capabilities



Translated
in 14 languages
(including Chinese
simplified)

User Interface main capabilities



Grids

- ▶ Sorting columns
- ▶ Resizing columns
- ▶ Columns block
- ▶ Show/Hide columns
- ▶ Multilevel filters
- ▶ Hierarchies multilevel
- ▶ Export Excel
- ▶ Easy reading with dual color

ITEM CODES LIST

Pr.	S	Item	Description	T.
19	ACI			
20		BRA-001	"This is the translation of BRA-001"	
21		BRP-001	"This is the translation of BRP-001"	
22	Summary - ACI			
23	Count	2		
24	ACQ			
25		AC-AB01	"This is the translation of AC-AB01"	
26		AC-AB02	"This is the translation of AC-AB02"	
27		AC-AERB01	"This is the translation of AC-AERB01"	
28		AC-DL1	"This is the translation of AC-DL1"	
29		AC-FH01	"This is the translation of AC-FH01"	
30		AC-FH02	"This is the translation of AC-FH02"	
31		AC-NOSNS	"This is the translation of AC-NOSNS"	
32		AC-1707201401	"This is the translation of AC-1707201401"	
33		AC-1707201402	"This is the translation of AC-1707201402"	
34		AC1-ABB001	"This is the translation of AC1-ABB001"	
35		AC1-ABB002	"This is the translation of AC1-ABB002"	
36		AC1-ABB003	"This is the translation of AC1-ABB003"	
37		AC1-DL2001	"This is the translation of AC1-DL2001"	
38		AC1-DL2002	"This is the translation of AC1-DL2002"	
39		AC1-GE001	"This is the translation of AC1-GE001"	
40		AC1-001	"This is the translation of AC1-001"	
41		AC1-002	"This is the translation of AC1-002"	
42		AC1-003	"This is the translation of AC1-003"	
43		AL01	"This is the translation of AL01"	
44		AL02	"This is the translation of AL02"	
45		BC-401	"This is the translation of BC-401"	
46		BC-401CINESE	"This is the translation of BC-401CINESE"	
47		BCA-101	"This is the translation of BCA-101"	
48		BCA-201	"This is the translation of BCA-201"	

ITEM CODES LIST

S	Item	Description	T.	Primary origin A	B.	Material feature	Pro.	Tec.	Comm.	Purc.	Com.	Creation date	Substitute co
1	AC-AB01	"This is the translation of AC-AB01"		ACQ					C			20140901	
2	AC-AB02	"This is the translation of AC-AB02"		ACQ					C			20140901	
3	AC-AERB01	"This is the translation of AC-AERB01"		ACQ					C			20141015	
4	AC-DL1	"This is the translation of AC-DL1"		ACQ					C			20140509	
5	AC-FH01	"This is the translation of AC-FH01"		ACQ					C			20141117	
6	AC-FH02	"This is the translation of AC-FH02"		ACQ					C			20141117	
7	AC-NOSNS	"This is the translation of AC-NOSNS"		ACQ					C			20141014	
8	AC-1707201401	"This is the translation of AC-1707201401"		ACQ					C			20140717	
9	AC-1707201402	"This is the translation of AC-1707201402"		ACQ					C			20140717	
10	AC1-ABB001	"This is the translation of AC1-ABB001"		ACQ					C			20140507	
11	AC1-ABB002	"This is the translation of AC1-ABB002"		ACQ					C			20140507	
12	AC1-ABB003	"This is the translation of AC1-ABB003"		ACQ					C			20140507	
13	AC1-DL2001	"This is the translation of AC1-DL2001"		ACQ					C			20140529	
14	AC1-DL2002	"This is the translation of AC1-DL2002"		ACQ					C			20140529	
15	AC1-GE001	"This is the translation of AC1-GE001"		ACQ					C			20140522	
16	AC1-001	"This is the translation of AC1-001"		ACQ					C			20140505	

Excel ribbon: Inizia, Layout, Tabelle, Grafici, SmartArt, Formule, Dati, Revisione, Visualizza

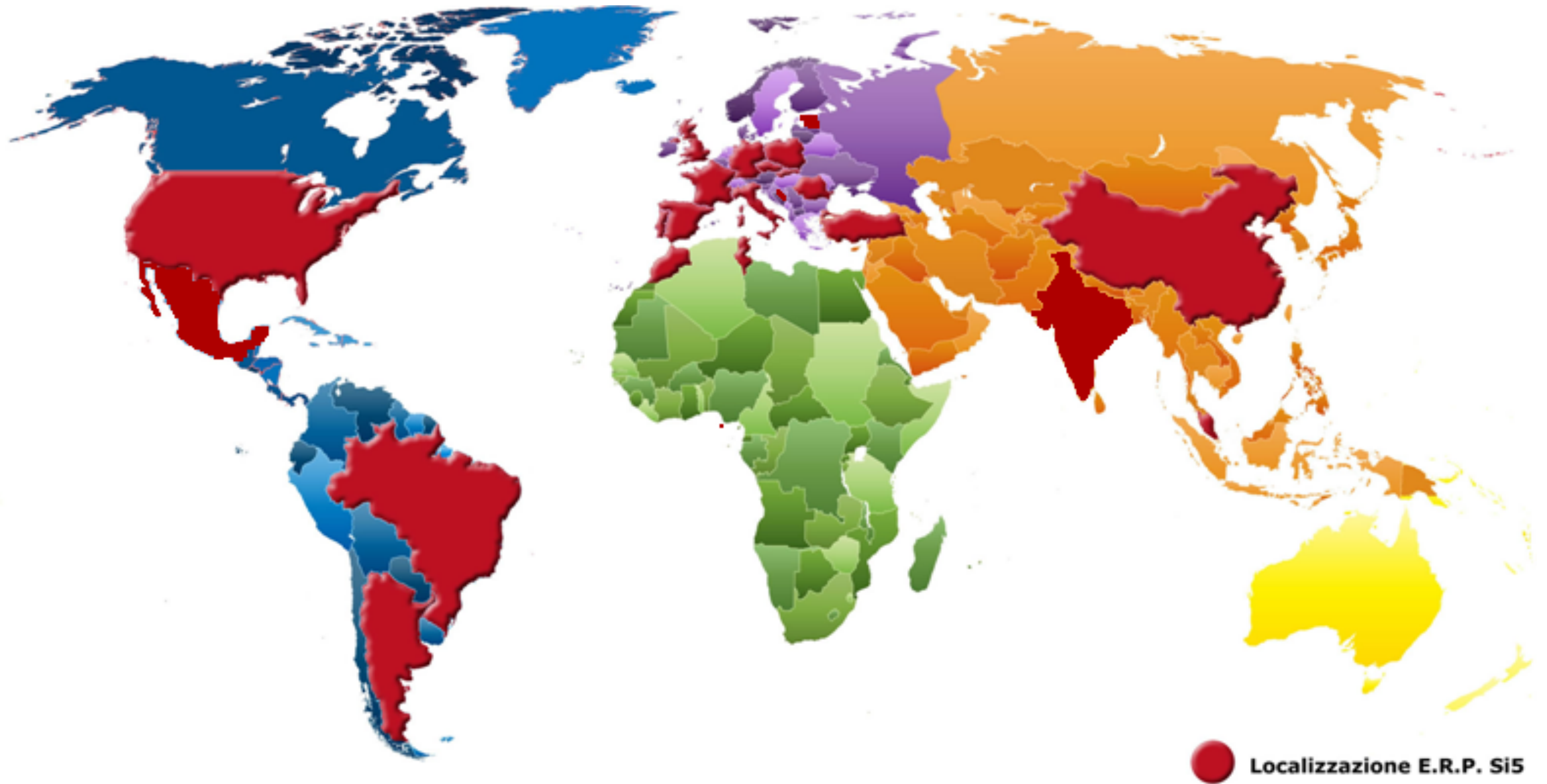
Excel status bar: Visualizzazione normale, Pronto, Somma=0

SORMA
IT and Management Consulting

☒

-
- The screenshot shows the WEBGATE400 application interface. At the top, there's a header bar with a logo and the text "IT and Management Consulting". Below this, a navigation bar contains "Function Keys", "Function Keys", and "Command Service". The main window is titled "WEBGATE400 Session..." and features a "Menu" sidebar on the right. The sidebar lists a "Main Menu" with sub-items: "SIG menu", "General inquiry", "Commercial", "Production", "Management check", "Administration", and "Warehouses". The main content area is divided into three sections: "General" with "General inquiry" and "Print Box" tiles; "Interface" with "SSP" and "SCP" tiles; and "Documentation" with "Home Spa" and "Wiki" tiles. The interface has a dark blue background with a geometric pattern.

Location in the world



International coverage

The ERP Sorma solution is designed in compliance with the tax laws of the following countries:

- | | |
|--|---|
| <input checked="" type="checkbox"/> France | <input checked="" type="checkbox"/> Lithuania |
| <input checked="" type="checkbox"/> Poland | <input checked="" type="checkbox"/> Malta |
| <input checked="" type="checkbox"/> Romania | <input checked="" type="checkbox"/> Serbia |
| <input checked="" type="checkbox"/> Slovakia | <input checked="" type="checkbox"/> Hungary |
| <input checked="" type="checkbox"/> United Kingdom | <input checked="" type="checkbox"/> Morocco |
| <input checked="" type="checkbox"/> Spain | <input checked="" type="checkbox"/> Tunisia |
| <input checked="" type="checkbox"/> China | <input checked="" type="checkbox"/> Turkey |
| <input checked="" type="checkbox"/> Germany | <input checked="" type="checkbox"/> Brazil |
| <input checked="" type="checkbox"/> Bulgaria | |



Other countries with installations without accounting localization

- | | | |
|---|--|---|
| <input checked="" type="checkbox"/> Mexico { | <input checked="" type="checkbox"/> India | <input checked="" type="checkbox"/> Denmark |
| <input checked="" type="checkbox"/> United States { | <input checked="" type="checkbox"/> Austria | <input checked="" type="checkbox"/> Finland |
| <input checked="" type="checkbox"/> Argentina | <input checked="" type="checkbox"/> Portugal | <input checked="" type="checkbox"/> Sweden |

{ } Upcoming accounting localization

International customers



Bitron Group: components for electronic, automotive and appliance
13 Plants in 6 countries (Europa/South America/Asia)



Carlo Gavazzi Automation: electronic components for industry and home automation
4 production site and sales companies in 10 countries



Denso Thermal System: components for the automotive industry
6 plants in 5 paesi (Europe/South America/Asia)



Emak Group: trimmers, brushcutters and chainsaws
3 plants in 2 paesi (Italy/China)



Magneti Marelli: components for the automotive industry
2 divisions with 6 plants in 4 countries (Europe/South America/USA)



Magnetto Group: molding/bodywork cars and industrial vehicles
18 plants in 7 countries (Europe/South America)

International customers



New Holland - CNH: agricultural and construction equipment
7 plants in 4 countries (Europe)



Sews Cabind: wiring for cars and industrial vehicles
6 plants in 5 countries (Italy/Morocco/Poland/Spain/Mexico)



Westaflex: hoses for the automotive industry
3 plants in 2 countries (Europe)



Leoni Wire and Cable: wiring for cars and industrial vehicles
7 plants in 5 countries (France/Spain/Morocco/Italy/Tunisia)



Gruppo Mista: sheared contacts and plastic components for cars
2 plants in 2 countries (Italy/Tunisia)



FCA: car
3 plants

☑ **COMPONENTS FOR CAR AND INDUSTRIAL VEHICLES**

FCA: sheet metal stamping and construction of the shell Maserati

TURINAUTO: sheet metal stamping

OMRON AUTOMOTIVE Italy: electronic components for car

CLERPREM: interiors for car and trucks

ILAS: molding and assembly tanks for cars and motorcycles

ALCAR: components of carpentry for earth-moving vehicles

ALGO: power windows

☑ **TRANSPORTS**

SICAMB: structural parts for aircraft

ADLER AERONAUTICA: components for aircraft

APR: aircraft components metal alloy

RODRIGUEZ CANTIERI NAVALI: civil shipyard, production ships and ferries

INTERMARINE: manufacturing civil and military vessels

CONSTRUCTION MACHINERY AND EQUIPMENT

BERTOLASO: machines and plants for winemaking

MBF: machines and plants for winemaking

OFFICINE BIGLIA: lathes and other machine tools

SICMAT: shaving machines for gears

MECAL: crimping machines for wiring construction

NARDI: agricultural tools

RANCILIO: coffee machines

RUBERTI: thermoforming plastic for vehicles and biomedical

COORD3: measuring machines

PROMOTEV: vibrating separators for construction sites and quarries

COMEZ: machine for the textile

EUREKA: industrial sweepers

GHIBLI: industrial vacuum cleaners and sweepers

KEY AND LOCKS

CISA: key, locks and padlocks, locking systems

ISEO SERRATURE: key, locks and padlocks, locking systems

NUOVA FEB: key, locks and padlocks, locking systems

CAVERS: key, locks and padlocks, locking systems

PHARMACEUTICAL AND BIOMEDICAL

GAMBRO DASCO: medical machines

BIOMATERIALI: medical materials

EUROSPITAL: pharmaceutical

BIOFARM ITALIA: pharmaceutical and cosmetic

SIIT: pharmaceuticals and supplements

ELECTRONICS

SIRENA: sound and visual equipment

EUTRON: electronics

AMISCO: electric coils

ELETTROMIL: electrical transformers

EUROHM: resistors

GHISALBA: components and controls

VARIOUS

DORIGUZZI: processing and sale timber

GIA: fastening systems

TEMPORA: logistics

CEWAL: measuring tools for fluids

SINTERLOY: sintering metals

si5

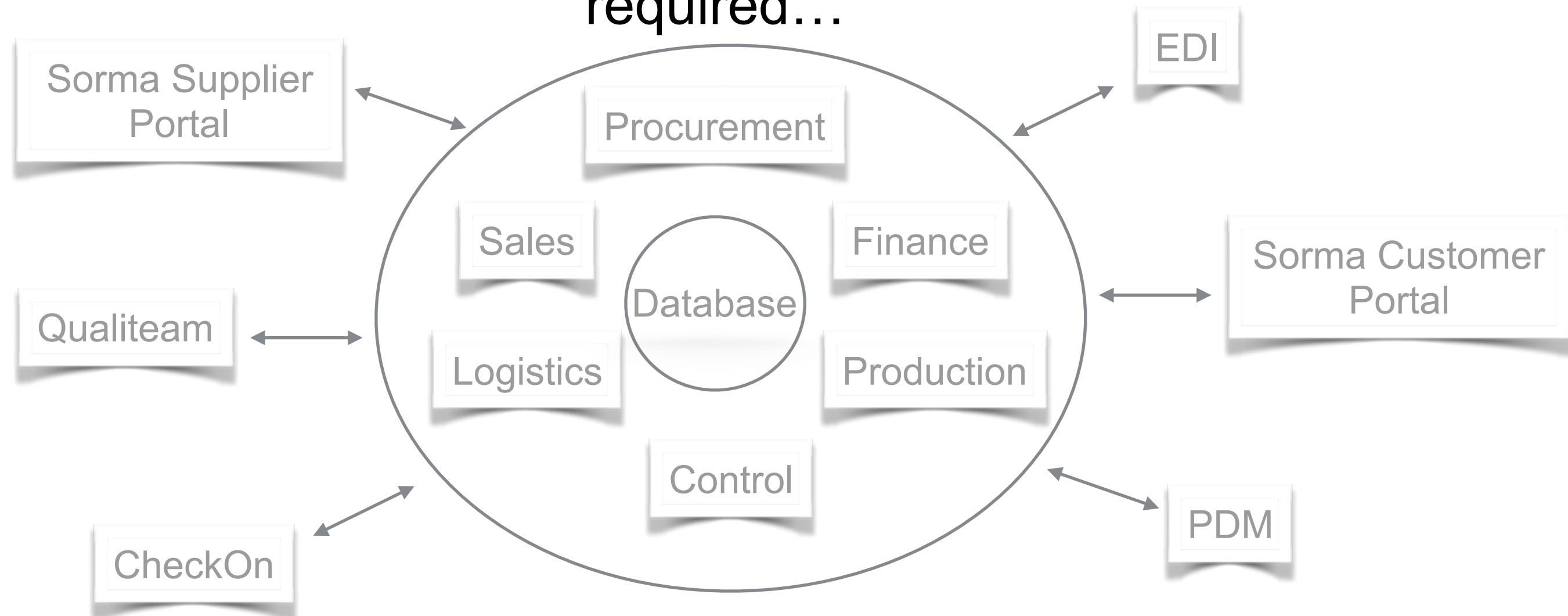
SORMA
IT and Management Consulting

The image displays various interfaces of the Si5 ERP system. Key components include:

- NUOVO LINK**: A form for creating new links, showing fields for 'Soggette' (ANU001) and 'Oggetto' (AC-AER001).
- Selezione Files/directories**: A dialog box for selecting files or directories, showing a list of files like 'MPE.png', 'giaccia_cattello', 'SCP_1.png', 'SCP_2.png', and 'Thumbs.db'.
- Query Test**: A window for testing SQL queries, showing a query for 'WAREHOUSE STOCK'.
- Stocks**: A table displaying inventory data with columns: 'Articolo', 'Descrizione', 'M. Y.', 'Propr.', 'Uscita', and 'Saldo'.
- WGInternal Viewer**: A window for viewing internal documents, showing a table with columns: 'S', 'P', 'Document Description 1', and 'Doc. Type'.
- Conteggio**: A window for counting items, showing a list of items and their counts.

Si5 is the web based ERP offering to industrial companies modern answers to the needs of management and business development with the ability to face the challenges of complex and global markets context

Fully integrated and modular depending the configuration required...



...with a world of customizations and web service, some examples:

- ☒ Data Warehouse
- ☒ Customer Portal
- ☒ Supplier Portal
- ☒ ANGAISA

- ☒ FCA Transport
- ☒ Digital signature SAFT
- ☒ Services company
- ☒ CheckOn

- ☒ Audit Trail
- ☒ SW Change management
- ☒ FatturaPA
- ☒ lungo Mail

Multicompany and centralization

☑ Multiplant or multicompany

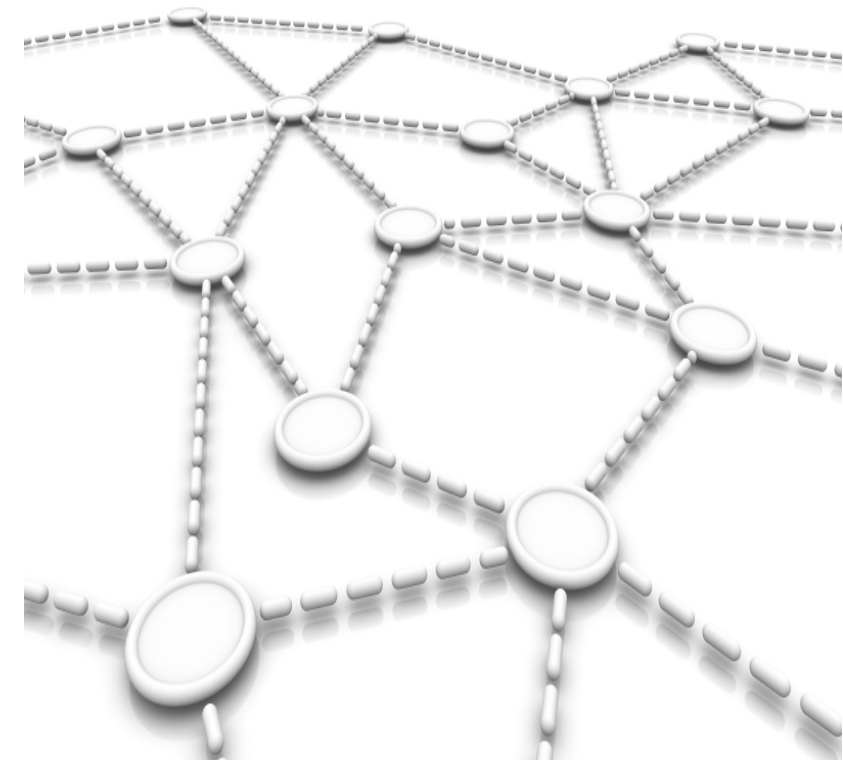
- ▶ more operational realities can be managed on the same machine and in the same environment

☑ Only one “run” to plan the whole enterprise

- ▶ Si5 is the only ERP capable of carry out the “multiplant planning”

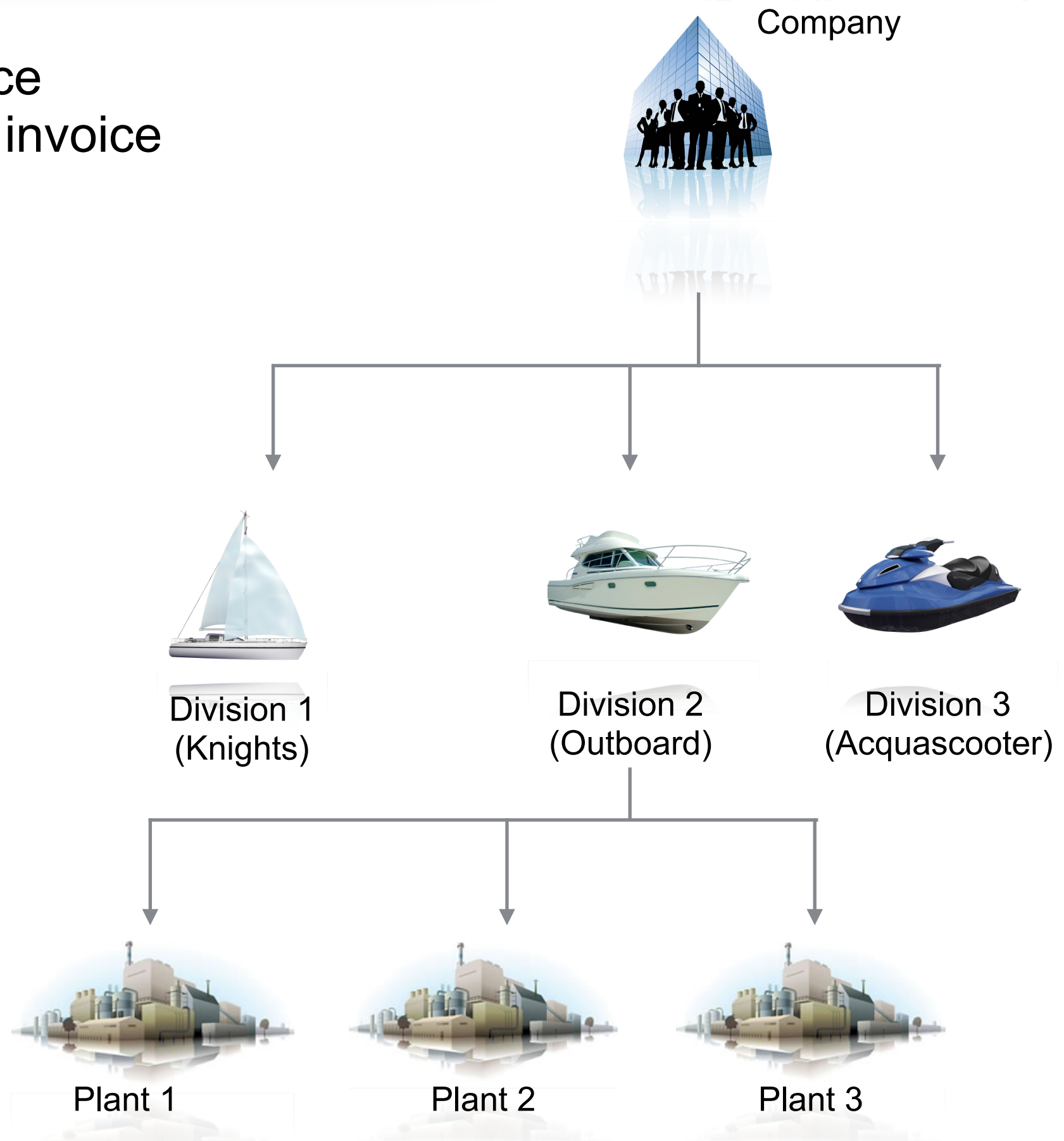
☑ Flexibility and Control

- ▶ Centralizing data or functions in specific plant



The 3 levels of the multiplant system

- ☑ Multiplant: NO invoice
- ☑ Multicompany: YES invoice

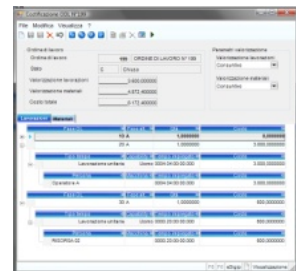


Automatic multicompany accounting flows

- ✓ Same way for chart of accounts regardless of the different taxation managed to foreign units (including China)
- ✓ Automatic processing accounting flows between different tax entities that make up the group
- ✓ Active and passive exchange of documents and automatic transfer of financial transactions

Company "A"

Invoice



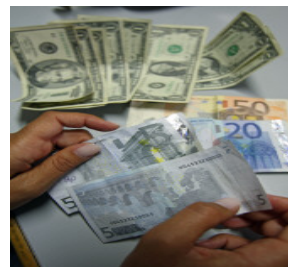
Active document

passive

Transfer

reversal recessed

Payments



Company "B"



- ☑ Centralization of Si5 data and functions
 - ▶ Data assumes absolute value in the company
 - ▶ The single plant specify the remaining information
- ☑ Example purchases:
 - ▶ All plants can issue orders
 - ▶ Only one is delegated to manage suppliers and prices
- ☑ Data that can be centralized:
 - ▶ Technical data
 - ▶ Analytical data
 - ▶ Various data
 - ▶ Cycles
 - ▶ Supplier articles
 - ▶ Purchase orders
 - ▶ Agents
 - ▶ Customer articles
 - ▶ Customer orders
 - ▶ Bill of materials
 - ▶ Suppliers
 - ▶ Prices supplier articles
 - ▶ Carriers
 - ▶ Customers
 - ▶ Sales lists
 - ▶ Costs
 - ▶ Accounting



When...who...what can do with Si5



Reporting

✓ BIRT native integration

▶ Output selection

- ☐ PDF
- ☐ XLSX
- ☐ DOCX

▶ Report design with Eclipse IDE

▶ Editable layout

▶ Custom logo for each plant

Evadibilt_prodotti_finiti_CbyQMf.pdf - Adobe Acrobat Reader DC

Home Tools Evadibilt_prodotti... Sign In

SORMA
IT and Management Consulting

Evadibilt prodotti finiti
Ordinamento per articolo

2/50
03/10/2016 21:49
ORC112ART

Numero item	BP-001	ASSIEME PEDIVELLE
Destinatario		
Tipo fabb	POS	0
Ordine	0	0
Articolo		
Stato		
Order type		
Data	02/01/16	
Fabbrospese	80,00	
Risorse		
Disponibilità	-80,00	
G. est. int.	0	

Numero item	BP-101-201	PACCO CORONE DENTATE
Destinatario		
Tipo fabb	POS	0
Ordine	0	0
Articolo		
Stato		
Order type		
Data	02/01/16	
Fabbrospese	90,00	
Risorse		
Disponibilità	-90,00	
G. est. int.	0	

Numero item	BP-301	PACCO CORONE DENTATE
Destinatario		
Tipo fabb	POS	0
Ordine	0	0
Articolo		
Stato		
Order type		
Data	02/01/16	
Fabbrospese	80,00	
Risorse		
Disponibilità	-80,00	
G. est. int.	0	

Numero item	OMG_MP001	PURCHASE MATERIAL
Destinatario		
Tipo fabb	PAC	0
Ordine	0	0
Articolo		
Stato		
Order type		
Data	02/01/16	
Fabbrospese	200,00	
Risorse		
Disponibilità	-200,00	
G. est. int.	0	

Numero item	OMG_MP003	PURCHASE MATERIAL
Destinatario		
Tipo fabb	POS	0
Ordine	0	0
Articolo		
Stato		
Order type		
Data	02/01/16	
Fabbrospese	1.628,00	
Risorse		
Disponibilità	-1.628,00	
G. est. int.	0	

Numero univoco report

E	F	G	H	I	J	K	L	M	N	O	P	Q	R	S	T	U	V	W
Program Data	Ora	Stabilimen	Articolo	Descrizione	Destinatario	Tipo fabb	Ordine	Numero di Stato	Tipo ordine	Linea	Data come	Fabbrospese	Risorse	Disponibilità	Giorni di			
ORC111	08/01/16	218204	AC-AB01	PARTE	ROOL	LA PRIMOIT CIVC	1008	1	0	CN	10/11/16	1000	0	98975	679			
ORC111	08/01/16	218204	AC-AB01	PARTE			184	0			02/01/16	6	0	80	0			
ORC111	08/01/16	218204	AC-AB01	PARTE			170	0			06/01/16	36	0	14	0			
ORC111	08/01/16	218204	AC-AB01	PARTE			186	0			26/01/16	6	0	10	0			
ORC111	08/01/16	218204	AC-AB01	PARTE			187	0			26/01/16	9	0	7	0			
ORC111	08/01/16	218204	AC-AB01	PARTE			188	0			26/01/16	5	0	2	0			
ORC111	08/01/16	218204	AC-AB01	PARTE			184	0			30/01/16	5	0	98729	0			
ORC111	08/01/16	218204	AC-AB01	PARTE			186	0			06/10/16	5	0	98724	0			
ORC111	08/01/16	218204	AC-AB01	PARTE			187	0			06/10/16	2	0	98722	0			
ORC111	08/01/16	218204	AC-AB01	PARTE			189	0			06/10/16	39	0	98712	0			
ORC111	08/01/16	218204	AC-AB01	PARTE			115	0			06/10/16	5	0	98707	0			
ORC111	08/01/16	218204	AC-AB01	PARTE			125	0			10/10/16	5	0	98702	0			
ORC111	08/01/16	218204	AC-AB01	PARTE			126	0			10/10/16	11	0	98690	0			
ORC111	08/01/16	218204	AC-AB01	PARTE			128	0			10/10/16	4	0	98686	0			
ORC111	08/01/16	218204	AC-AB01	PARTE			134	0			10/10/16	4	0	98682	0			
ORC111	08/01/16	218204	AC-AB01	PARTE			135	0			10/10/16	4	0	98678	0			
ORC111	08/01/16	218204	AC-AB01	PARTE			137	0			10/10/16	4	0	98674	0			
ORC111	08/01/16	218204	AC-AB01	PARTE			138	0			10/10/16	4	0	98670	0			
ORC111	08/01/16	218204	AC-AB01	PARTE			140	0			10/10/16	36	0	98654	0			
ORC111	08/01/16	218204	AC-AB01	PARTE			141	0			10/10/16	36	0	98650	0			
ORC111	08/01/16	218204	AC-AB01	PARTE			142	0			10/10/16	2	0	98646	0			
ORC111	08/01/16	218204	AC-AB01	PARTE			143	0			10/10/16	2	0	98642	0			
ORC111	08/01/16	218204	AC-AB01	PARTE			144	0			10/10/16	2	0	98638	0			
ORC111	08/01/16	218204	AC-AB01	PARTE			145	0			10/10/16	5	0	98627	0			
ORC111	08/01/16	218204	AC-AB01	PARTE			146	0			20/10/16	8	0	98628	0			
ORC111	08/01/16	218204	AC-AB01	PARTE			147	0			20/10/16	6	0	98615	0			
ORC111	08/01/16	218204	AC-AB01	PARTE			148	0			20/10/16	6	0	98611	0			
ORC111	08/01/16	218204	AC-AB01	PARTE			149	0			20/10/16	6	0	98607	0			
ORC111	08/01/16	218204	AC-AB01	PARTE			150	0			20/10/16	8	0	98603	0			
ORC111	08/01/16	218204	AC-AB01	PARTE			151	0			20/10/16	8	0	98599	0			
ORC111	08/01/16	218204	AC-AB01	PARTE			152	0			20/10/16	8	0	98595	0			
ORC111	08/01/16	218204	AC-AB01	PARTE			153	0			20/10/16	8	0	98591	0			
ORC111	08/01/16	218204	AC-AB01	PARTE			154	0			20/10/16	8	0	98587	0			
ORC111	08/01/16	218204	AC-AB01	PARTE			155	0			20/10/16	8	0	98583	0			
ORC111	08/01/16	218204	AC-AB01	PARTE			156	0			20/10/16	8	0	98579	0			
ORC111	08/01/16	218204	AC-AB01	PARTE			157	0			20/10/16	10	0	98575	0			
ORC111	08/01/16	218204	AC-AB01	PARTE			158	0			20/10/16	10	0	98571	0			

Summa=0